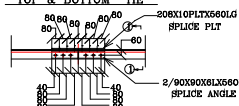


TYP. SPLICE DETAIL FOR TOP & BOTTOM TIE



NOTE
POSITION OF SPLICE TO BE FIXED AT SITE
DEPENDING ON THE LENGTH OF SECTION



DETAIL OF PURLIN CUT

VIEW ON 3-1
VIEW ON 3A-3A

ENLARGED VIEW ON 3-5

GENERAL NOTE
UNLESS OTHERWISE STATED
ALL HOLES 17.5 DIA FOR 16 DIA BOLTS
ALL WELDS 6MM THK FILLET
ALL GUSSETS ARE 6MM THK PLATE
STEEL WORK TO BE GIVEN A COAT OF
RED OXIDE PAINT BEFORE DESPATCH

FOR MARKING OF TRUSS REFER DRG NO-01

REV. NO	DATE	BY	CHKD	APPD. BY
1	17/06/2008	M/S. PRADEEP PARTIKAR		
<p>STRUCTURAL COMBINES PRIVATE LIMITED STRUCTURAL, MECHANICAL, ELEC. DESIGN AND PROJECT CONSULTANTS 303, II FLOOR, 167, BELDAMS ROAD, ALWARPET, CHENNAI - 600 016.</p>				
CLIENT :		M/S. L&L BUILDS LIMITED FACTORY AT KESSEENARAJAPET		
CONSULTANT :				
M/S. ASHWINI SANKARAN & SETHUPATI CONSULTING ENGINEERS & ARCHITECTS				
DETAIL :	TRUSS	DRAWN :	CHKD :	DATE :
		DRAWN :	CHKD :	13/06/2008
SCALE :	1:100 (L&L)	APPD :		
WORK ORDER NO :	19/000/2000	PROJECT NO :		
DRG NO :	03	REV. NO :	A	

100X12PLTX400LG

ENLARGED DETAIL - J-I

ENLARGED APEX DETAIL

- 3-PAIRS NOS TRUSSES REQD AS DRAWN & MKD - 3/TI/3TI
- 2-NOS TRUSSES REQD AS DRAWN (BUT WITHOUT B & R HLS) MKD -T3
- 2-NOS TRUSSES REQD AS DRAWN (BUT WITHOUT R HLS) MKD -T2
- 2-NOS TRUSSES REQD AS DRAWN (BUT WITHOUT B & R HLS) MKD -T5
- 2-NOS TRUSSES REQD AS DRAWN (BUT WITHOUT R HLS) MKD -T4